
South Central Alabama Comprehensive Economic Development Strategy

August 2012
2013 Updated Excerpt



CGI Group, Inc. in Troy

Hyundai Motor Manufacturing Alabama in Montgomery



SCADC
SOUTH CENTRAL ALABAMA
DEVELOPMENT COMMISSION

Acknowledgements:

Funding for the CEDS is provided by the U.S. Department of Commerce, Economic Development Administration and matching funds by the South Central Alabama Development Commission and its member governments.



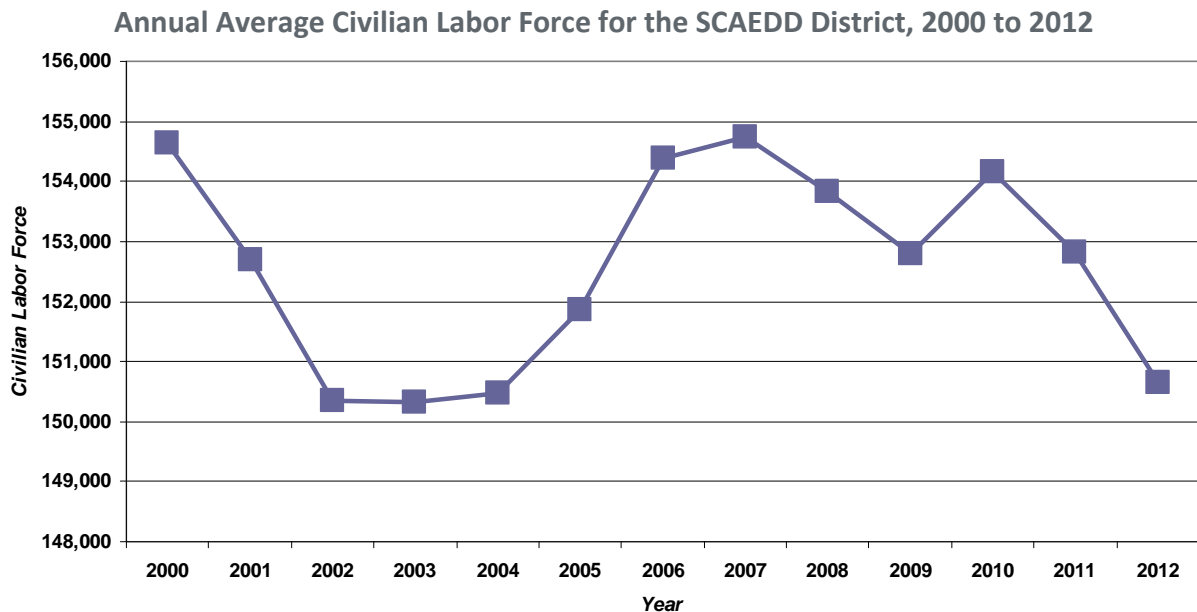
SERVING BULLOCK, BUTLER, CRENSHAW, LOWNDES, MACON, MONTGOMERY & PIKE COUNTIES
5900 CARMICHAEL PLACE | MONTGOMERY, AL 36117 | P 334.244.6903 | F 334.271.2715 | SCADC.NET

Workforce Development

The South Central Alabama Economic Development District is located in three Workforce Development Council of Alabama (WDCA) regions. Butler, Crenshaw, Lowndes and Montgomery Counties are located in WDCA Region 7, with Autauga and Elmore Counties. Bullock and Macon Counties are located in WDCA Region 8, along with Chambers, Lee and Russell Counties. And Pike County is the only SCAEDD county located in WDCA Region 10, which includes Barbour, Coffee, Covington, Dale, Geneva, Henry and Houston Counties.

Labor Force

In 2012, the SCAEDD had an annual average labor force of 150,650 persons according to the Alabama Department of Labor. The 2012 labor force was a decrease of 2.6 percent, or 3,990 persons, from the 2000 labor force of 154,640 persons. During the 12-year time frame, the region's labor force was notably unstable with decreases of 1.3 percent between 2000 and 2001 and 1.5 percent between 2001 and 2002. The number of persons in the labor force slowly increased each year between 2003 and 2007. Between 2007 and 2009, however, the labor force again dropped by 1.1 percent losing 1,627 workers. Between 2009 and 2010, the region's combined labor force increased slightly only to decrease again between 2010 and 2012. In the last two years, the SCAEDD labor force lost almost as many workers, at 3,518 persons, as it did in the entire last 12 years.



Source for Employment and Unemployment Data: Alabama Department of Labor, Estimates prepared by the Alabama Department of Labor in cooperation with the Bureau of Labor Statistics based on 2012 benchmarks.

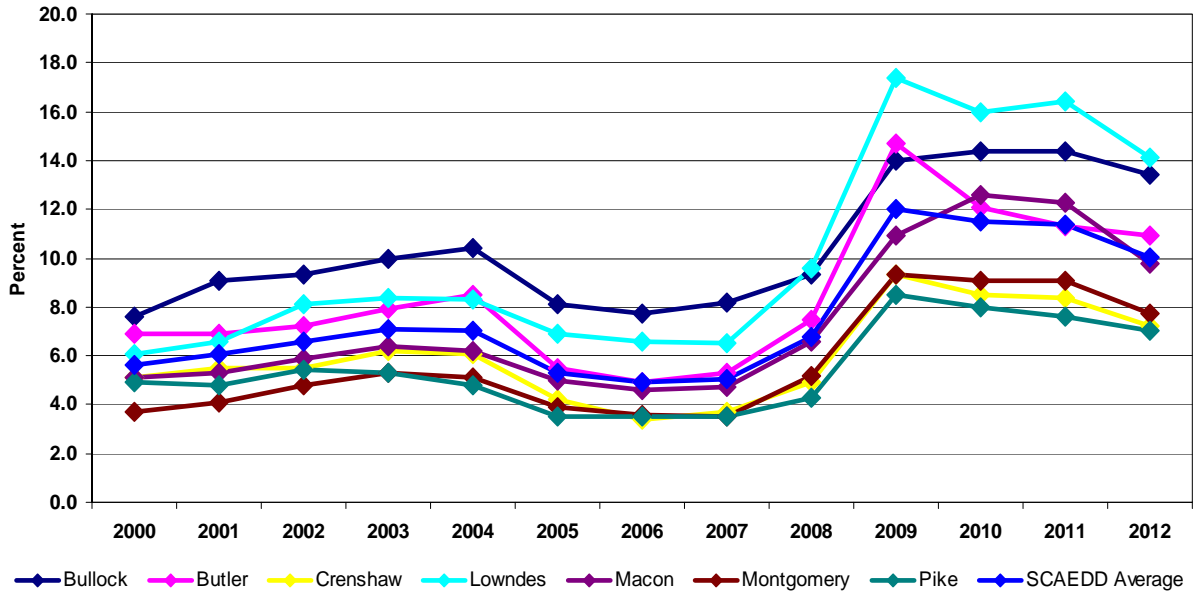
Only two counties, Crenshaw and Pike, did not suffer an overall decrease in the labor force between 2000 and 2012, but even they had a decrease in the labor force in the last two years. The labor force in Pike County increased by 13.3 percent between 2000 and 2010 but decreased by 3.6 percent between 2010 and 2012 for an overall gain in the labor force of 9.2 percent between 2000 and 2012. Likewise, the labor force in Crenshaw County increased by 6.2 percent between 2000 and 2010 but decreased by 1.3 percent between 2010 and 2012 for an overall gain in the labor force of 4.8 percent between 2000 and 2012. The remaining five counties did not fair nearly as well with Lowndes County having a loss of 19.2 percent of the labor force equating to 975 workers, followed by Bullock County with a loss of 11.5 percent of the labor force equating to 460 workers. Although Montgomery County had the lowest percentage of loss, at 3.0 percent, the county lost the most workers, at 3,231 persons. The labor force in Butler County decreased by 3.4 percent with a loss of 309 workers. Similarly, the labor force of Macon County decreased by 6.7 percent with a loss of 610 workers between 2000 and 2012.

Unemployment

After skyrocketing from 6.8 percent in 2008 to 12.0 percent in 2009, the average annual unemployment rate for the SCAEDD region has steadily decreased and reached an average of 7.7 percent for the first seven months of 2013. While still higher than that of the state, at 6.9 percent, and equal to that of the nation, the 2013 regionwide unemployment rate is a significant improvement over previous years. During the first months of 2013, unemployment rates were lowest in April in each of the counties. Regionwide, the unemployment rate dropped from 8.6 percent in January to 6.7 percent in April. Since April, however, unemployment has crept back up to 7.6 percent in July for the region. The 2012 annual average unemployment rate for the SCAEDD was 10.0 percent. Among the seven counties of the region, 2012 unemployment rates varied considerably with Lowndes County having the highest unemployment rate of 14.1 percent, followed by Bullock County, at 13.4 percent, Butler County, at 10.9 percent, and Macon County, at 9.8 percent. Pike County had the lowest unemployment rate in 2012, at 7.0 percent, followed by Crenshaw County, at 7.2 percent, and Montgomery County, at 7.7 percent. Between 2000 and 2012, the annual average unemployment rate for the region increased by 77.9 percent, with Lowndes County experiencing the most significant increase of 131.1 percent, followed by Montgomery County, at 108.1 percent, and Macon County, at 92.2

percent. As shown in the chart below, unemployment in all of the district's counties have followed the same trend, with the unemployment rate slowly increasing between 2000 and 2004 then declining between 2004 and 2007 prior to sharp increases between 2007 and 2009. Since 2009, unemployment rates have decreased which would generally indicate economic improvement in the area.

Average Annual Unemployment Rate, 2000 to 2012



Source for Employment and Unemployment Data: Alabama Department of Labor, Estimates prepared by the Alabama Department of Labor in cooperation with the Bureau of Labor Statistics based on 2012 benchmarks.

2012 Annual Average Employment Statistics

Area	Civilian Labor Force	Employment	Unemployment	Unemployment Rate
Bullock County	3,533	3,060	473	13.4
Butler County	8,903	7,937	966	10.9
Crenshaw County	6,462	5,996	466	7.2
Lowndes County	4,114	3,534	580	14.1
Macon County	8,547	7,710	837	9.8
Montgomery County	103,607	95,607	8,000	7.7
Pike County	15,484	14,405	1,079	7
SCAEDD	150,650	138,249	12,401	10.0%
Alabama	2,156,301	1,999,182	157,119	7.3%
United States	154,975,000	142,459,000	12,506,000	8.1%

Source for Employment and Unemployment Data: Alabama Department of Labor, Estimates prepared by the Alabama Department of Labor in cooperation with the Bureau of Labor Statistics based on 2012 benchmarks.

The unemployment rate, however, only tells part of the story. The other part is a decline in the labor force as workers have moved away or otherwise left the labor force as shown in the previous section on the labor force. Therefore, while unemployment rates have been on the decline in recent years, the actual number of persons that are unemployed is still much greater than at the beginning of the decade. In 2000, there were a total of 6,677 unemployed persons in the seven counties with a combined labor force of 154,640 persons equating to a regional unemployment rate of 5.6 percent. As of 2012, there are 12,401 unemployed persons with a combined labor force of 150,650 persons for a regional unemployment rate of 10.0 percent. As would be expected, Montgomery County has the highest number of unemployed persons, at 8,000 persons, followed by Pike County, at 1,079 persons, Butler County, at 966 persons, and Macon County, at 837 persons.

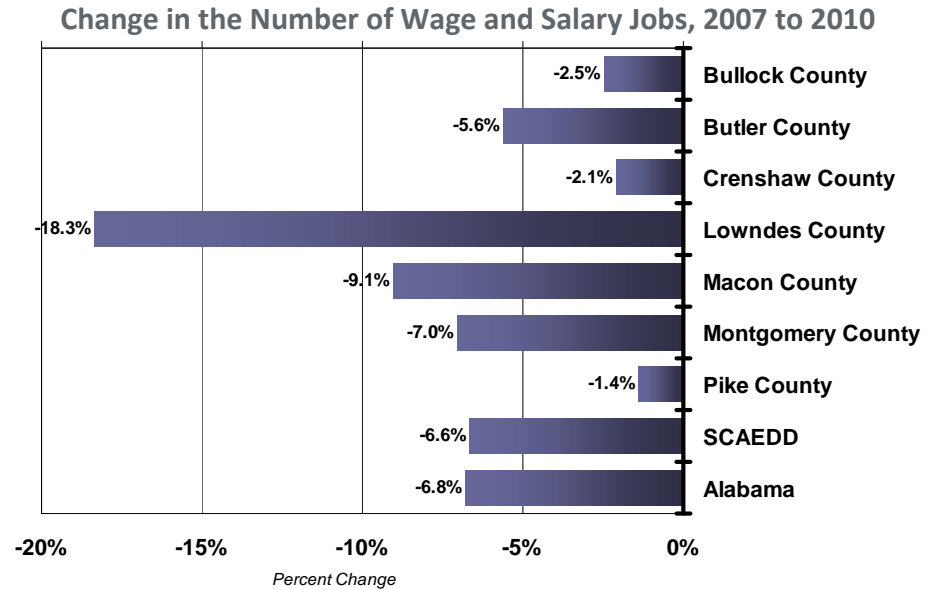
Job Loss

The employment and unemployment rates have been volatile over the last decade, as new jobs have dramatically increased but other industries have closed. The SCAEDD, as is the case in much of Alabama, is considered to have a shortage of workers, prepared to work in the amounts and kinds of industry locating in the region. The jobs gained in the early part of the decade with the location of Hyundai and its suppliers have been lost by other industries in the last part of the decade. Data available through the Bureau of Economic Analysis indicates that regionwide, the number of wage and salary jobs decreased 6.6 percent from 195,347 jobs in 2007 to 182,369 jobs in 2010 -- a combined loss of 12,978 jobs. The State of Alabama experienced a similar decrease of 6.8 percent. The impact on several of the region's counties was even greater. In fact, none of the counties gained wage and salary jobs between 2007 and 2010. Lowndes County lost 704 jobs in the three year time period, equating to an 18.3 percent loss. Macon County had a 9.1 percent decrease, with a loss of 620 jobs; Montgomery County lost 10,887 jobs and Butler County lost 422 jobs. Although not as severe as the other counties, Bullock, Crenshaw and Pike Counties also suffered cumulative job losses ranging from 1.14 percent to 2.5 percent.

Average Wage

Although the region suffered major job loss between 2007 and 2010, the average wage per job increased in every county of the region. The average county wage per job among the seven counties increased 10.4 percent to \$33,428 in 2010. Although the state had less of an increase, the average wage per job, \$39,626, is still

considerably higher than that of the region. The only county in the region that has an average wage higher than that of the state's wage is Montgomery County, at \$41,365, which was a 9.0 percent increase.



Source: Bureau of Economic Analysis. Internet release date, Dec. 2011

*Employment
by Industry*

In the SCAEDD, 81.7 percent of workers were employed in wage and salary type jobs while 18.3 percent were proprietor employment as of 2010. Of the proprietor employment, 7.4 percent were farm proprietors and 92.6 were non-farm proprietors. In comparison to the state, the SCAEDD had fewer proprietors than the state, at 21.5 percent, although the breakdown of farm (7.9 percent) and nonfarm (92.1 percent) proprietors at the state level was similar to that of the region. Counties that had higher than the regional average of proprietor employment included Bullock at 25.9 percent, Butler at 26.7 percent, Crenshaw at 35.1 percent, Lowndes at 36.5 percent, and Macon at 25.4 percent. All of the counties in the region, except Montgomery County, had a higher percentage of farm proprietors than the region as a whole or the state. The percentage of farm proprietors was highest in Crenshaw County, at 25.9 percent, and lowest in Macon County, at 15.5 percent, followed by Butler County, at 16.7 percent.

Major employment sectors in 2010 are those industries that employ more than 10 percent of the total workers. In Alabama, major employment sectors included retail trade and state and local government. On a regional basis, only state and local government, at

16.9 percent, was the only industry that employed more than 10 percent of the workers. Retail trade was the next highest, at 9.0 percent, followed by manufacturing, at 8.6 percent, and healthcare and social assistance, at 8.4 percent. Other secondary employment sectors (those that employ between 5 percent and 9.9 percent) in the region included administrative and waste management services, at 7.5 percent, other services except public administration, at 6.9 percent, and accommodation and food services, at 5.9 percent. At the state level, there were six industries that employed between 5.0 percent and 9.9 percent of the total workers: manufacturing, at 9.8 percent; other services except public administration, at 7.3 percent; accommodation and food services, at 6.6 percent; administrative and waste management services, at 6.2 percent; construction at 5.9 percent; and, professional, scientific and technical services, at 5.5 percent.

At the individual county level in 2010, state and local government was a major employment sector in all counties, employing between 11.1 percent in Butler County and 37.5 percent in Macon County. Farm employment was a major employment sector in three counties: Bullock, at 19.6 percent; Crenshaw, at 13.3 percent; and Lowndes, at 12.0 percent. Other major employment industries included manufacturing, health care and social assistance, retail trade, other services except public administration and transportation and warehousing. Secondary major industries at the county level included forestry and fishing, construction, manufacturing, wholesale trade, retail trade, finance and insurance, administrative and waste management services, health care and social assistance, accommodation and food services, and other services except public administration. More detailed information is available in Table 21 of Appendix A.

Appendix B: Data Tables

List of Tables

- 1: County Population, 1960 to 2010
- 1A: Percent Change in Population, 1960 to 2010 and 2010 to 2011
- 2: Population and Housing Density, 2010
- 3: Urban Population vs. Rural Population, 2010
- 4: Population of SCAEDD Municipalities and Percent Change, 2000 and 2010
- 5: County Population Projections, 2015 to 2035
- 6: County and Municipality Population by Race, 2010
- 7: Median Age of Population, 2011
- 8: Population by Gender, 2011
- 9: Educational Attainment, 2010
- 10: Median Family Income, 1980 to 2010
- 11: Per Capita Personal Income, 1970 to 2010
- 12: Poverty Estimates, 2010
- 13: Workforce Development Regions of Alabama
- 14: Labor Force and Employment, January to July 2013
- 14a: Labor Force and Employment, 2012
- 15: Annual Average Civilian Labor Force
- 16: Annual Average Employment
- 17: Annual Average Unemployment
- 18: Annual Average Unemployment Rate
- 19: Wage and Salary Employment, 2007-2010
- 20: Average Wage Per Job, 2007-2010 (in dollars)
- 21: Type of Employment and Employment by Industry, 2010
- 22: Land Use in Acres, 2007
- 23: Emergency Management Hazard Mitigation and Contact Information
- 24: Total Housing Units and Housing Occupancy, 2010
- 25: Housing Occupancy by Tenure, 2010
- 26: Announced New and Expanded Industries
- 27: Industrial Sites Located in SCAEDD

Table 14: Labor Force and Employment; January to July, 2013, Not Seasonally Adjusted

2013	JAN	FEB	MAR	APR	MAY	JUN	JUL	YTD AVG
BULLOCK								
Civilian Labor Force	3,519	3,473	3,440	3,358	3,397	3,466	3,500	3,450
Employment	3,029	3,012	3,036	3,009	3,030	3,074	3,071	3,037
Unemployment	490	461	404	349	367	392	429	413
Unemployment Rate	13.9%	13.3%	11.7%	10.4%	10.8%	11.3%	12.3%	12.0%
BUTLER								
Civilian Labor Force	8,793	8,996	8,967	8,957	9,123	9,179	9,215	9,033
Employment	7,793	7,958	8,054	8,163	8,276	8,294	8,325	8,123
Unemployment	1,000	1,038	913	794	847	885	890	910
Unemployment Rate	11.4%	11.5%	10.2%	8.9%	9.3%	9.6%	9.7%	10.1%
CRENSHAW								
Civilian Labor Force	6,433	6,448	6,422	6,412	6,466	6,511	6,552	6,463
Employment	5,939	5,928	5,986	6,037	6,062	6,081	6,117	6,021
Unemployment	494	520	436	375	404	430	435	442
Unemployment Rate	7.7%	8.1%	6.8%	5.8%	6.2%	6.6%	6.6%	6.8%
LOWNDES								
Civilian Labor Force	4,066	4,114	4,128	4,089	4,030	4,053	4,111	4,085
Employment	3,480	3,523	3,572	3,637	3,601	3,588	3,601	3,572
Unemployment	586	591	556	452	429	465	510	513
Unemployment Rate	14.4%	14.4%	13.5%	11.1%	10.6%	11.5%	12.4%	12.6%
MACON								
Civilian Labor Force	8,483	8,655	8,726	8,693	8,668	8,719	8,724	8,667
Employment	7,598	7,810	7,886	7,986	7,922	7,880	7,895	7,854
Unemployment	885	845	840	707	746	839	829	813
Unemployment Rate	10.4%	9.8%	9.6%	8.1%	8.6%	9.6%	9.5%	9.4%
MONTGOMERY								
Civilian Labor Force	102,407	103,615	104,239	105,069	104,298	104,703	104,967	104,186
Employment	94,174	95,315	96,647	98,413	97,442	97,070	97,439	96,643
Unemployment	8,233	8,300	7,592	6,656	6,856	7,633	7,528	7,543
Unemployment Rate	8.0%	8.0%	7.3%	6.3%	6.6%	7.3%	7.2%	7.2%
PIKE								
Civilian Labor Force	15,356	15,294	15,343	15,412	15,284	15,373	15,366	15,347
Employment	14,189	14,139	14,285	14,506	14,331	14,289	14,341	14,297
Unemployment	1,167	1,155	1,058	906	953	1,084	1,025	1,050
Unemployment Rate	7.6%	7.6%	6.9%	5.9%	6.2%	7.1%	6.7%	6.8%
SOUTH CENTRAL ALABAMA EDD								
Civilian Labor Force	149,057	150,595	151,265	151,990	151,266	152,004	152,435	151,230
Employment	136,202	137,685	139,466	141,751	140,664	140,276	140,789	139,548
Unemployment	12,855	12,910	11,799	10,239	10,602	11,728	11,646	11,683
Unemployment Rate	8.6%	8.6%	7.8%	6.7%	7.0%	7.7%	7.6%	7.7%
ALABAMA								
Civilian Labor Force	2,131,101	2,156,363	2,159,062	2,173,409	2,165,463	2,168,765	2,171,645	2,160,830
Employment	1,965,739	1,987,720	2,010,901	2,044,107	2,029,298	2,022,506	2,028,839	2,012,730
Unemployment	165,362	168,643	148,161	129,302	136,165	146,259	142,806	148,100
Unemployment Rate	7.8%	7.8%	6.9%	5.9%	6.3%	6.7%	6.6%	6.9%
UNITED STATES (in 1,000s)								
Civilian Labor Force	154,794	154,727	154,512	154,739	155,734	157,089	157,196	155,542
Employment	141,614	142,228	142,698	143,724	144,432	144,841	145,113	143,521
Unemployment	13,181	12,500	11,815	11,014	11,302	12,248	12,083	12,020
Unemployment Rate	8.5%	8.1%	7.6%	7.1%	7.3%	7.8%	7.7%	7.7%
Source: Alabama Department of Labor in cooperation with the Bureau of Labor Statistics, based on 2012 benchmark.								

Table 14a: Labor Force and Employment; 2012, Not Seasonally Adjusted

2012	JAN	FEB	MAR	APR	MAY	JUN
BULLOCK						
Civilian Labor Force	3,538	3,511	3,512	3,406	3,554	3,612
Employment	3,085	3,060	3,107	3,027	3,142	3,102
Unemployment	453	451	405	379	412	510
Unemployment Rate	12.8%	12.8%	11.5%	11.1%	11.6%	14.1%
BUTLER						
Civilian Labor Force	8,799	8,826	8,953	8,772	9,011	9,152
Employment	7,867	7,860	7,987	7,895	8,062	8,043
Unemployment	932	966	966	877	949	1,109
Unemployment Rate	10.6%	10.9%	10.8%	10.0%	10.5%	12.1%
CRENSHAW						
Civilian Labor Force	6,415	6,391	6,440	6,372	6,553	6,577
Employment	5,918	5,894	5,993	5,960	6,102	6,064
Unemployment	497	497	447	412	451	513
Unemployment Rate	7.7%	7.8%	6.9%	6.5%	6.9%	7.8%
LOWNDES						
Civilian Labor Force	4,127	4,135	4,130	4,096	4,140	4,198
Employment	3,482	3,487	3,503	3,521	3,542	3,539
Unemployment	645	648	627	575	598	659
Unemployment Rate	15.6%	15.7%	15.2%	14.0%	14.4%	15.7%
MACON						
Civilian Labor Force	8,508	8,464	8,501	8,434	8,533	8,719
Employment	7,643	7,647	7,659	7,679	7,717	7,707
Unemployment	865	817	842	755	816	1,012
Unemployment Rate	10.2%	9.7%	9.9%	9.0%	9.6%	11.6%
MONTGOMERY						
Civilian Labor Force	102,339	102,293	102,589	102,326	103,662	105,078
Employment	94,201	94,351	94,792	95,271	95,829	95,750
Unemployment	8,138	7,942	7,797	7,055	7,833	9,328
Unemployment Rate	8.0%	7.8%	7.6%	6.9%	7.6%	8.9%
PIKE						
Civilian Labor Force	15,067	15,129	15,322	15,556	15,742	15,663
Employment	13,989	14,102	14,270	14,629	14,739	14,393
Unemployment	1,078	1,027	1,052	927	1,003	1,270
Unemployment Rate	7.2%	6.8%	6.9%	6.0%	6.4%	8.1%
SOUTH CENTRAL ALABAMA EDD						
Civilian Labor Force	148,793	148,749	149,447	148,962	151,195	152,999
Employment	136,185	136,401	137,311	137,982	139,133	138,598
Unemployment	12,608	12,348	12,136	10,980	12,062	14,401
Unemployment Rate	8.5%	8.3%	8.1%	7.4%	8.0%	9.4%
ALABAMA						
Civilian Labor Force	2,134,693	2,138,923	2,144,007	2,137,214	2,157,536	2,185,703
Employment	1,971,350	1,975,399	1,989,708	1,997,161	2,003,871	2,005,393
Unemployment	163,343	163,524	154,299	140,053	153,665	180,310
Unemployment Rate	7.7%	7.6%	7.2%	6.6%	7.1%	8.2%
UNITED STATES						
Civilian Labor Force	153,485,000	154,114,000	154,316,000	153,905,000	154,998,000	156,385,000
Employment	139,944,000	140,684,000	141,412,000	141,995,000	142,727,000	143,202,000
Unemployment	13,541,000	13,430,000	12,904,000	11,910,000	12,271,000	13,184,000
Unemployment Rate	8.8%	8.7%	8.4%	7.7%	7.9%	8.4%

Source: Alabama Department of Labor in cooperation with the Bureau of Labor Statistics, based on 2012 benchmark.

Table 14a Continued: Labor Force and Employment, 2012, Not Seasonally Adjusted

2012	JUL	AUG	SEP	OCT	NOV	DEC	YTD AVG
BULLOCK COUNTY							
LABOR FORCE	3,666	3,627	3,509	3,525	3,477	3,456	3,533
EMPLOYMENT	3,103	3,045	3,005	3,016	3,013	3,012	3,060
UNEMPLOYMENT	563	582	504	509	464	444	473
UNEMPL. RATE	15.4%	16.0%	14.4%	14.4%	13.3%	12.8%	13.4%
BUTLER COUNTY							
LABOR FORCE	9,139	9,021	8,869	8,825	8,735	8,723	8,903
EMPLOYMENT	8,009	7,939	7,913	7,906	7,895	7,863	7,937
UNEMPLOYMENT	1,130	1,082	956	919	840	860	966
UNEMPL. RATE	12.4%	12.0%	10.8%	10.4%	9.6%	9.9%	10.8%
CRENSHAW COUNTY							
LABOR FORCE	6,629	6,518	6,414	6,470	6,400	6,361	6,462
EMPLOYMENT	6,095	6,027	5,961	6,008	5,981	5,949	5,996
UNEMPLOYMENT	534	491	453	462	419	412	466
UNEMPL. RATE	8.1%	7.5%	7.1%	7.1%	6.5%	6.5%	7.2%
LOWNDES COUNTY							
LABOR FORCE	4,196	4,093	4,069	4,093	4,059	4,027	4,114
EMPLOYMENT	3,537	3,529	3,556	3,577	3,566	3,564	3,534
UNEMPLOYMENT	659	564	513	516	493	463	580
UNEMPL. RATE	15.7%	13.8%	12.6%	12.6%	12.1%	11.5%	14.1%
MACON COUNTY							
LABOR FORCE	8,691	8,636	8,519	8,584	8,498	8,475	8,547
EMPLOYMENT	7,703	7,720	7,733	7,787	7,779	7,742	7,710
UNEMPLOYMENT	988	916	786	797	719	733	837
UNEMPL. RATE	11.4%	10.6%	9.2%	9.3%	8.5%	8.6%	9.8%
MONTGOMERY COUNTY							
LABOR FORCE	104,790	104,286	104,070	104,673	103,622	103,555	103,607
EMPLOYMENT	95,708	95,475	96,229	96,775	96,474	96,427	95,607
UNEMPLOYMENT	9,082	8,811	7,841	7,898	7,148	7,128	8,000
UNEMPL. RATE	8.7%	8.4%	7.5%	7.5%	6.9%	6.9%	7.7%
PIKE COUNTY							
LABOR FORCE	15,634	15,515	15,476	15,716	15,551	15,441	15,484
EMPLOYMENT	14,421	14,295	14,412	14,617	14,557	14,437	14,405
UNEMPLOYMENT	1,213	1,220	1,064	1,099	994	1,004	1,079
UNEMPL. RATE	7.8%	7.9%	6.9%	7.0%	6.4%	6.5%	7.0%
SOUTH CENTRAL ALABAMA EDD							
LABOR FORCE	152,745	151,696	150,926	151,886	150,342	150,038	150,648
EMPLOYMENT	138,576	138,030	138,809	139,686	139,265	138,994	138,248
UNEMPLOYMENT	14,169	13,666	12,117	12,200	11,077	11,044	12,401
UNEMPL. RATE	9.3%	9.0%	8.0%	8.0%	7.4%	7.4%	8.2%
UNADJUSTED ALABAMA							
LABOR FORCE	2,178,836	2,162,766	2,158,617	2,173,182	2,154,298	2,149,837	2,156,301
EMPLOYMENT	2,000,098	1,992,552	2,006,974	2,021,656	2,016,615	2,009,411	1,999,182
UNEMPLOYMENT	178,738	170,214	151,643	151,526	137,683	140,426	157,119
UNEMPL. RATE	8.2%	7.9%	7.0%	7.0%	6.4%	6.5%	7.3%
UNADJUSTED UNITED STATES							
LABOR FORCE	156,526,000	155,255,000	155,075,000	155,779,000	154,953,000	154,904,000	154,975,000
EMPLOYMENT	143,126,000	142,558,000	143,333,000	144,039,000	143,549,000	143,060,000	142,469,000
UNEMPLOYMENT	13,400,000	12,696,000	11,742,000	11,741,000	11,404,000	11,844,000	12,506,000
UNEMPL. RATE	8.6%	8.2%	7.6%	7.5%	7.4%	7.6%	8.1%

Source: Alabama Department of Industrial Relations, 2011 benchmark.

Table 15: Annual Average Civilian Labor Force, 2000 to 2012

	Bullock	Butler	Crenshaw	Lowndes	Macon	Montgomery	Pike	SCAEDD
2000	3,993	9,212	6,167	5,089	9,157	106,838	14,184	154,640
2001	3,931	9,067	6,052	5,047	8,981	105,972	13,646	152,696
2002	3,864	9,134	5,831	5,021	8,765	104,011	13,716	150,342
2003	3,929	9,088	5,870	4,967	8,449	103,734	14,291	150,328
2004	3,812	8,951	5,748	4,891	8,513	103,627	14,929	150,471
2005	3,695	9,056	6,146	4,896	8,633	104,504	14,934	151,864
2006	3,687	9,240	6,614	4,802	8,844	105,982	15,210	154,379
2007	3,629	9,083	6,552	4,739	8,859	106,275	15,594	154,731
2008	3,585	8,953	6,418	4,783	9,018	105,360	15,707	153,824
2009	3,679	8,951	6,376	4,820	9,234	104,073	15,667	152,800
2010	3,746	9,119	6,549	4,321	9,114	105,254	16,065	154,168
2011	3,675	9,063	6,685	4,204	8,736	104,612	15,846	152,821
2012	3,533	8,903	6,462	4,114	8,547	103,607	15,484	150,650
% Change 00-10	-6.2%	-1.0%	6.2%	-15.1%	-0.5%	-1.5%	13.3%	-0.3%
% Change '10-12	-5.7%	-2.4%	-1.3%	-4.8%	-6.2%	-1.6%	-3.6%	-2.3%
% Change 00-12	-11.5%	-3.4%	4.8%	-19.2%	-6.7%	-3.0%	9.2%	-2.6%

Source: Estimates prepared by the Alabama Department of Labor in Cooperation with the Bureau of Labor Statistics.

Table 16: Annual Average Employment, 2000 to 2012

	Bullock	Butler	Crenshaw	Lowndes	Macon	Montgomery	Pike	SCAEDD
2000	3,691	8,576	5,855	4,777	8,688	102,885	13,491	147,963
2001	3,574	8,445	5,721	4,715	8,506	101,598	12,985	145,544
2002	3,505	8,478	5,509	4,613	8,250	98,969	12,971	142,295
2003	3,535	8,373	5,508	4,550	7,912	98,257	13,536	141,671
2004	3,417	8,193	5,397	4,486	7,985	98,313	14,213	142,004
2005	3,394	8,556	5,889	4,559	8,199	100,440	14,417	145,454
2006	3,402	8,785	6,387	4,487	8,441	102,184	14,685	148,371
2007	3,332	8,601	6,309	4,431	8,446	102,530	15,054	148,703
2008	3,251	8,279	6,106	4,322	8,427	99,888	15,035	145,308
2009	3,165	7,638	5,784	3,981	8,226	94,347	14,341	137,482
2010	3,206	8,017	5,991	3,628	7,970	95,724	14,780	139,316
2011	3,145	8,043	6,123	3,516	7,665	95,140	14,635	138,267
2012	3,060	7,937	5,996	3,534	7,710	95,607	14,405	138,249
% Change 00-10	-13.1%	-6.5%	2.3%	-24.1%	-8.3%	-7.0%	9.6%	-5.8%
% Change '10-12	-4.6%	-1.0%	0.1%	-2.6%	-3.3%	-0.1%	-2.5%	-0.8%
% Change 00-12	-17.1%	-7.5%	2.4%	-26.0%	-11.3%	-7.1%	6.8%	-6.6%

Source: Estimates prepared by the Alabama Department of Labor in Cooperation with the Bureau of Labor Statistics.

Table 17: Annual Average Unemployment, 2000 to 2012

	Bullock	Butler	Crenshaw	Lowndes	Macon	Montgomery	Pike	SCAEDD
2000	302	636	312	312	469	3,953	693	6,677
2001	357	622	331	332	475	4,374	661	7,152
2002	359	656	322	408	515	5,042	745	8,047
2003	394	715	362	417	537	5,477	755	8,657
2004	395	758	351	405	528	5,314	716	8,467
2005	301	500	257	337	434	4,064	517	6,410
2006	285	455	227	315	403	3,798	525	6,008
2007	297	482	243	308	413	3,745	540	6,028
2008	334	674	312	461	591	5,472	672	8,516
2009	514	1,313	592	839	1,008	9,726	1,326	15,318
2010	540	1,102	558	693	1,144	9,530	1,285	14,852
2011	530	1,020	562	688	1,071	9,472	1,211	14,554
2012	473	966	466	580	837	8,000	1,079	12,401
% Change '00 to '10	78.8%	73.3%	78.8%	122.1%	143.9%	141.1%	85.4%	122.4%
% Change '10 to '12	-12.4%	-12.3%	-16.5%	-16.3%	-26.8%	-16.1%	-16.0%	-16.5%
% Change '00 to '12	56.6%	51.9%	49.4%	85.9%	78.5%	102.4%	55.7%	85.7%

Source: Estimates prepared by the Alabama Department of Labor in Cooperation with the Bureau of Labor Statistics.

Table 18: Annual Average Unemployment Rate, 2000 to 2012

	Bullock	Butler	Crenshaw	Lowndes	Macon	Montgomery	Pike	SCAEDD Average
2000	7.6	6.9	5.1	6.1	5.1	3.7	4.9	5.6
2001	9.1	6.9	5.5	6.6	5.3	4.1	4.8	6.0
2002	9.3	7.2	5.5	8.1	5.9	4.8	5.4	6.6
2003	10.0	7.9	6.2	8.4	6.4	5.3	5.3	7.1
2004	10.4	8.5	6.1	8.3	6.2	5.1	4.8	7.1
2005	8.1	5.5	4.2	6.9	5.0	3.9	3.5	5.3
2006	7.7	4.9	3.4	6.6	4.6	3.6	3.5	4.9
2007	8.2	5.3	3.7	6.5	4.7	3.5	3.5	5.1
2008	9.3	7.5	4.9	9.6	6.6	5.2	4.3	6.8
2009	14.0	14.7	9.3	17.4	10.9	9.3	8.5	12.0
2010	14.4	12.1	8.5	16.0	12.6	9.1	8.0	11.5
2011	14.4	11.3	8.4	16.4	12.3	9.1	7.6	11.4
2012	13.4	10.9	7.2	14.1	9.8	7.7	7.0	10.0
% Change 00-10	89.5%	75.4%	66.7%	162.3%	147.1%	145.9%	63.3%	104.8%
% Change '10-12	-6.9%	-9.9%	-15.3%	-11.9%	-22.2%	-15.4%	-12.5%	-13.1%
% Change 00-12	76.3%	58.0%	41.2%	131.1%	92.2%	108.1%	42.9%	77.9%

Source: Estimates prepared by the Alabama Department of Labor in Cooperation with the Bureau of Labor Statistics.